

**RAID Manager Tool
User Manual v3.130**

ASMedia Confidential

Catalogue

1. Program Main Menu	3
RAID information	3
Mode Change	4
Advanced Setting	6
Event Log	6
Other Configurations	7

ASMedia Confidential

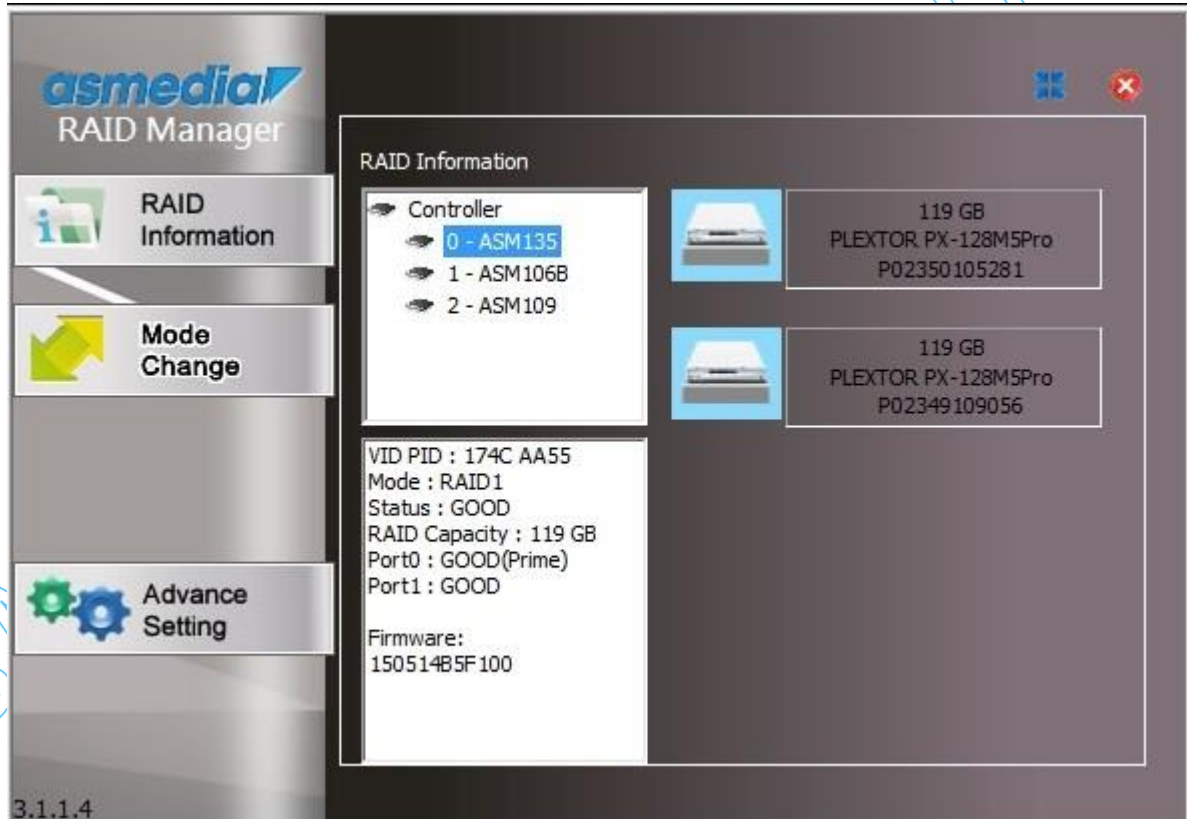
1. Program Main Menu

RAID information

(1) Detecting ASM1352R 、ASM1061R 、ASM1062R 、ASM109R Controller

If there is no controller device connected to host, then this program will not show of this item.

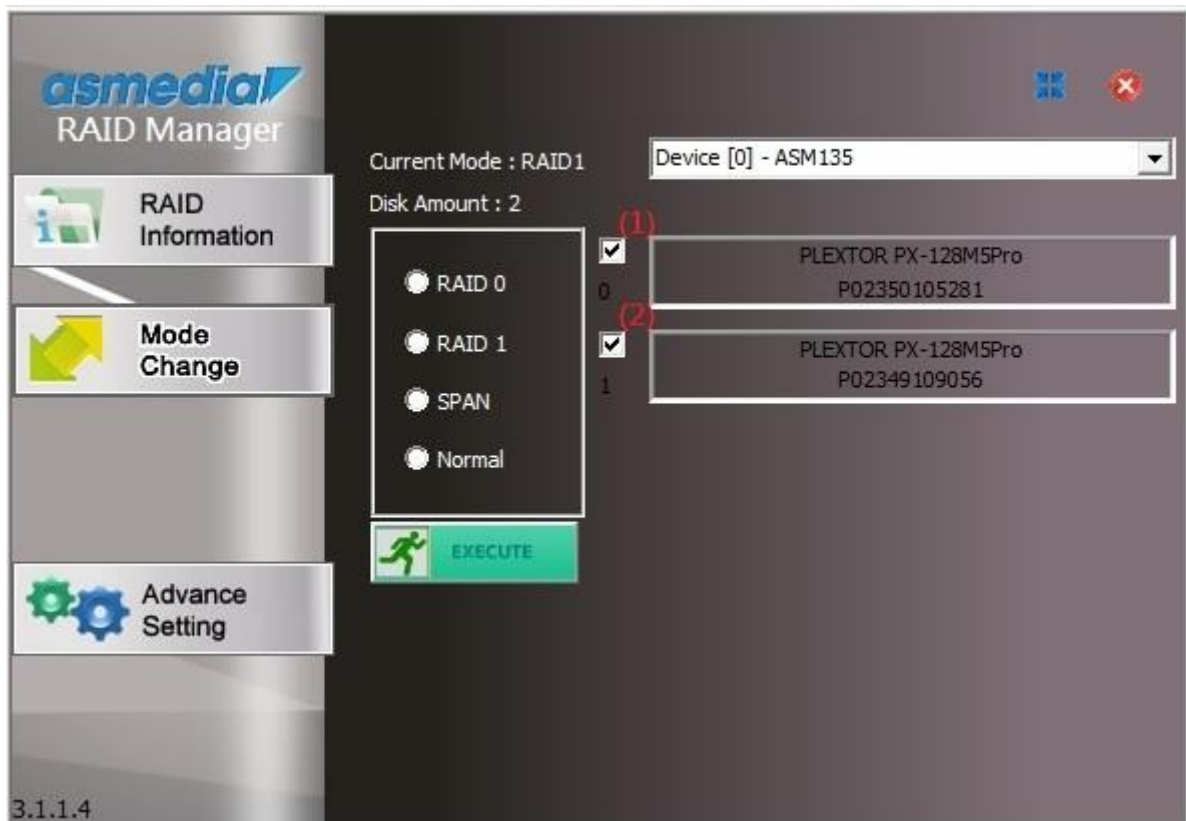
To click the device will show the detail status of Controller.



(2) To push X button will hide Main Menu into notification-area. If user wants to turn off the tool, needs to disable it in system notification.



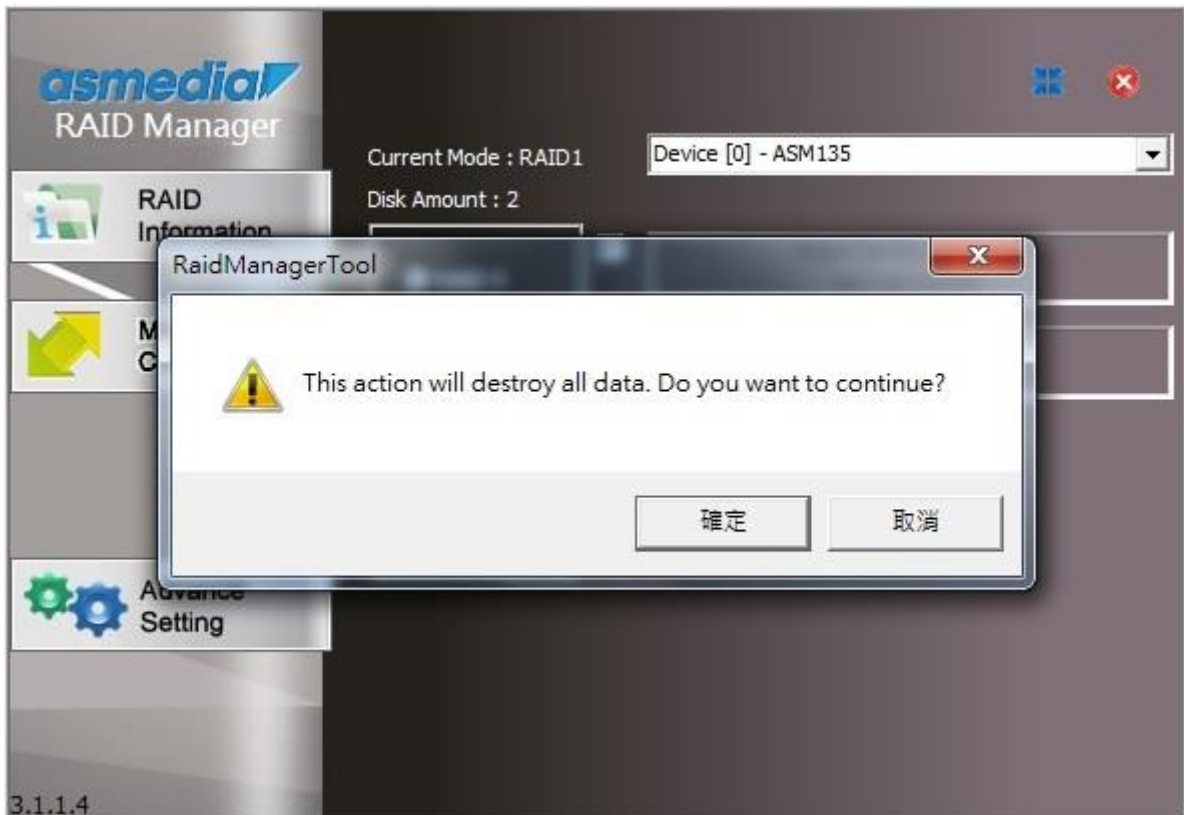
Mode Change



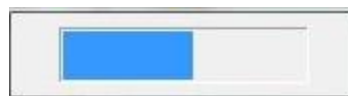
After choosing device, tool will show HDDs which are available to be built RAID.

- (1) If you want to add disk into the RAID group, please tick the disk.
- (2) It is the order of disks in the RAID group.

After pressing “EXECUTE”, tool will pop out the warning “This action will destroy all data.”



PS1 : After mode change is completed, the window will show a waiting connection, please wait till window disappear then operate ASM1062R RAID Manager.



Advanced Setting

Event Log

asmedia RAID Manager

RAID Information

Mode Change

Advance Setting

3.1.1.4

Email | Event Log | Other Config

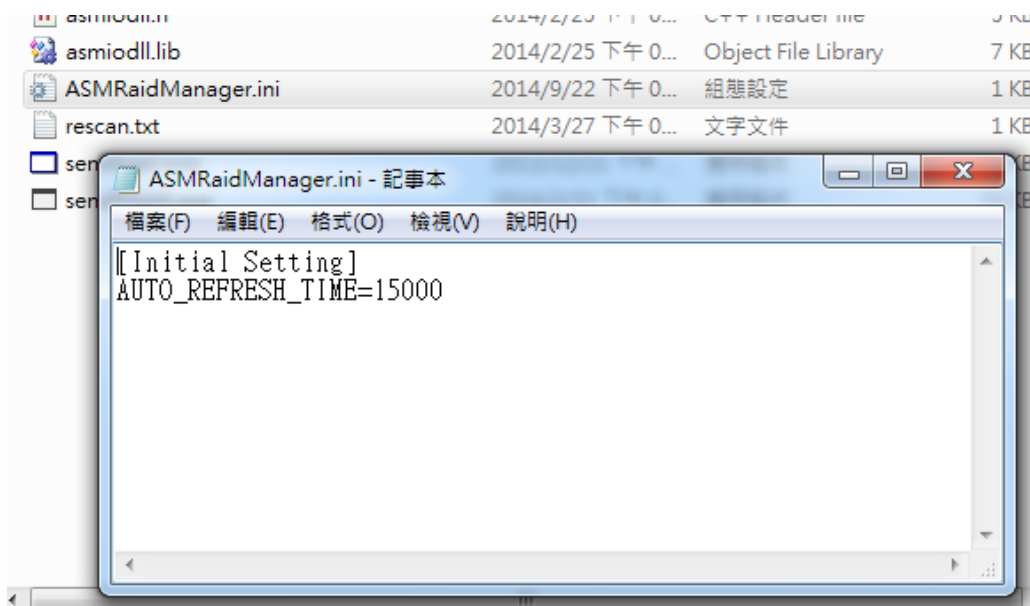
Event Log Refresh

Clear All Event

Event NO.	Event Time	Event Type	Ev
Event NO.1	2015/07/23 16:45:53	REGULAR	Device [2]-ASM10
Event NO.2	2015/07/24 11:24:52	REGULAR	Device [2] : ASM
Event NO.3	2015/07/24 11:25:08	WARNING	Plug in devi
Event NO.4	2015/07/24 11:25:11	WARNING	Plug in devi
Event NO.5	2015/07/24 11:25:25	ERROR	Device [1]-ASM106B F
Event NO.6	2015/07/24 11:28:22	REGULAR	Device [2] : ASM1
Event NO.7	2015/07/24 11:28:37	WARNING	Plug in devi
Event NO.8	2015/07/24 11:28:40	WARNING	Plug in devi
Event NO.9	2015/07/24 11:29:41	REGULAR	Device [2] : ASM
Event NO.10	2015/07/24 11:30:04	WARNING	Plug in devi
Event NO.11	2015/07/24 11:30:09	WARNING	Plug in devi
Event NO.12	2015/07/24 11:31:33	REGULAR	Device [2] : ASM1
Event NO.13	2015/07/24 11:31:48	WARNING	Plug in devi
Event NO.14	2015/07/24 11:31:56	WARNING	Plug in devi

Showing the event records of RAID Manager Tool.

Other Configurations



Auto Refresh Time:

If user wants to change/update the interval of RAID info, please open "ASMRaidManager.ini" and modify the number following "AUTO_REFRESH_TIME="

The default value is 15000(ms).